



NC DEPARTMENT OF TRANSPORTATION
 DIVISION OF HIGHWAYS
 BRIDGE MANAGEMENT UNIT

ATTENTION

PRIORITY MAINTENANCE ISSUED ON PILES
 SHORED STRUCTURE
 PILE REPAIRS: CONCRETE ENCASEMENTS

BRIDGE INSPECTION REPORT

INSPECTION TYPE: Routine Inspection

COUNTY SAMPSON BRIDGE NUMBER 810101 INSPECTION CYCLE 2 YRS
 ROUTE SR1256 ACROSS BIG SWAMP CREEK M.P. 0

LOCATION 0.4 MI E.JCT SR1410

SUPERSTRUCTURE RC FLOOR/TIMBER JOISTS (STD. BMD-10)

SUBSTRUCTURE EBTS&IBTS:TIMBER CAPS/TIMBER PILES @ 8'CTS,CRUTCH BT@BT3

SPANS 1@17'9";1@17'1";1@17';1@16'10";1@17'11

LONGITUDE 78° 34' 25.8"

LATITUDE 34° 59' 44.4"

PRESENT CONDITION FAIR

INVENTORY RATING _____

INSPECTION DATE 08/25/2010

OPERATING RATING _____

PRESENT POSTING SV 18 TTST 26 SV 18 TTST 26

PROPOSED POSTING _____

COMPUTER UPDATE _____

ANALYSIS DATE _____

POSTING LETTER DATE _____

SUFFICIENCY RATING _____

OTHER SIGNS PRESENT _____



LOOKING EAST

SIGN NOTICE ISSUED FOR	NUMBERED REQUIRED
<u>No</u> WEIGHT LIMIT	_____
<u>No</u> DELINEATORS	_____
<u>No</u> NARROW BRIDGE	_____
<u>No</u> ONE LANE BRIDGE	_____
<u>No</u> LOW CLEARANCE	_____

NATIONAL BRIDGE INVENTORY----- STRUCTURE INVENTORY AND APPRAISAL Run Date: 10/11/2010

IDENTIFICATION

(1) STATE NAME -NORTH CAROLINA BRIDGE 810101
 (8) STRUCTURE NUMBER(FEDERAL) 000000001630101
 INVENTORY ROUTE (ON/UNDER) - ON 131012560
 (2) STATE HIGHWAY DEPARTMENT DISTRICT 3
 (3) COUNTY CODE 163 (4) PLACE CODE 00000
 (6) FEATURE INTERSECTED - BIG SWAMP CREEK
 (7) FACILITY CARRIED SR1256
 (9) LOCATION 0.4 MI E.JCT SR1410
 (11)MILEPOINT 0
 (16)LAT 34° 59' 44.4" (17)LONG 78° 34' 25.8"
 (98)BORDER BRIDGE STATE CODE PCT SHARE
 (99)BORDER BRIDGE STRUCTURE NO

SUFFICIENCY RATING = 33.7
 STATUS = Structurally Deficient

CLASSIFICATION CODE

(112)NBIS BRIDGE SYSTEM - YES
 (104)HIGHWAY SYSTEM NON NHS Route 0
 (26) FUNCTIONAL CLASS - Local 09
 (100)STRAHNET HIGHWAY - Not a STRAHNET Route 0
 (101)PARALLEL STRUCTURE - No Parallel Structure N
 (102)DIRECTION OF TRAFFIC - 2-way Traffic 2
 (103)TEMPORARY STRUCTURE - Temporary T
 (110)DESIGNATED NATIONAL NETWORK - Not Part of 0
 (20) TOLL On Free Road 3
 (31) MAINTAIN - State Highway Agency 01
 (22) OWNER - State Highway Agency 01
 (37) HISTORICAL SIGNIFICANCE - Not Eligible 5

STRUCTURE TYPE AND MATERIAL

(43) STRUCTURE TYPE MAIN: Wood or Timber
 TYPE - Stringer Mutlibeam or Girder CODE 702
 (44) STRUCTURE TYPE APPR :
 TYPE - CODE
 (45) NUMBER OF SPANS IN MAIN UNIT 5
 (46) NUMBER OF APPROACH SPANS
 (107)DECK STRUCTURE TYPE - Concrete cast-in-place CODE 1
 (108)WEARING SURFACE / PROTECTIVE SYSTEM :
 (A) TYPE OF WEARING SURFACE - Concrete CODE 1
 (B) TYPE OF MEMBRANE - None CODE 0
 (C) TYPE OF DECK PROTECTION - None CODE 0

CONDITION CODE

(58) DECK 5
 (59) SUPERSTRUCTURE 6
 (60) SUBSTRUCTURE 3
 (61) CHANNEL & CHANNEL PROTECTION 6
 (62) CULVERTS N

LOAD RATING AND POSTING CODE

(31) DESIGN LOAD Other or Unknown 0
 (64) OPERATING RATING - HS-1 201
 (66) INVENTORY RATING - HS-1 201
 (70) BRIDGE POSTING - Posting Required 0
 (41) STRUCTURE OPEN, POSTED ,OR CLOSED P
 DESCRIPTION - Posted for Load

AGE AND SERVICE

(27) YEAR BUILT 1962
 (106)YEAR RECONSTRUCTED
 (42) TYPE OF SERVICE : ON - Highway
 UNDER - Waterway CODE 15
 (28) LANES: ON STRUCTURE 2 UNDER STRUCTURE
 (29) AVERAGE DAILY TRAFFIC 210
 (30) YEAR OF ADT 2005 (109) TRUCK ADT PCT 6 %
 (19) BYPASS OR DETOUR LENGTH 4 MI

APPRAISAL CODE

(67) STRUCTURAL EVALUATION 2
 (68) DECK GEOMETRY 5
 (69) UNDERCLEARANCES,VERTI & HORIZ N
 (71) WATERWAY ADEQUACY 7
 (72) APPROACH ROADWAY ALIGNMENT 8
 (36) TRAFFIC SAFETY FEATURES 0000
 (113)SCOUR CRITICAL BRIDGES U
 SCOUR PLAN OF ACTION

GEOMETRIC DATA

(48) LENGTH OF MAXIMUM SPAN 18 FT
 (49) STRUCTURE LENGTH 87 FT
 (50)CURB OR SIDEWALK: LEFT 0.8 FT RIGHT 0.8 FT
 (51) BRIDGE ROADWAY WIDTH CURB TO CURB 24.0 FT
 (52) DECK WIDTH OUT TO OUT 25.3 FT
 (32) APPROACH ROADWAY WIDTH (W/SHOULDERS) 18.0 FT
 (33) BRIDGE MEDIAN - No Median CODE 0
 (34) SKEW 0° (35) STRUCTURE FLARED NO
 (10) INVENTORY ROUTE MIN VERT CLEAR 99 FT 99 IN
 (47) INVENTORY ROUTE TOTAL HORIZ CLEAR 24.0 FT
 (53) MIN VERT CLEAR OVER BRIDGE RDWY 99 FT 99 IN
 (54) MIN VERT UNDERCLEAR REF Not a Highway or Railroad
 (55) MIN LAT UNDERCLEAR RT REF Not a Highway or Railroad 99.9 FT
 (56) MIN LAT UNDERCLEAR LT REF - 0.0 FT

PROPOSED IMPROVEMENTS

(75) TYPE OF WORK - CODE 311
 (76) LENGTH OF STRUCTURE IMPROVEMENT 113 FT
 (94) BRIDGE IMPROVEMENT COST \$242,000
 (95) ROADWAY IMPROVEMENT COST \$61,000
 (96) TOTAL PROJECT COST \$363,000
 (97) YEAR OF IMPROVEMENT COST ESTIMATE 2007
 (114)FUTURE ADT 420 (115) YEAR FUTURE ADT 2025

NAVIGATION DATA

(38) NAVIGATION CONTROL - No Navigational Control CODE 0
 (111)PIER PROTECTION - Not Applicable CODE
 (39) NAVIGATION VERTICAL CLEARANCE 0
 (116)VERT - LIFT BRIDGE NAV MIN VERT CLEAR
 (40) NAVIGATION HORIZONTAL CLEARANCE 0

INSPECTIONS

(90) INSPECTION DATE 08/25/2010
 (92) CRITICAL FEATURE INSPECTION : (93) CFI DATE
 A) FRACTURE CRIT DETAIL - NO A)
 B) UNDERWATER INSP - YES 48Mo B) 03/01/2010
 C) OTHER SPECIAL INSP NO C)
 SCOUR

BRIDGE INSPECTION RECORD AND SUMMARY

INSPECTION TYPE Routine Inspection
 BRIDGE NO. 810101 COUNTY SAMPSON ROUTE SR1256 OVER BIG SWAMP CREEK
 STRUCTURE TYPE RC FLOOR/TIMBER JOISTS (STD. BMD-10)
 ROUTE ORIENTATION W - E SPANS 1@17'9";1@17'1";1@17';1@16'10";1@17'11"

EVALUATION CODE: 0-2 CRITICAL, 3 & 4 POOR, 5 & 6 FAIR, 7-9 GOOD

INSPECTION ITEM			ITEM 61							
DECK ITEMS		GRADES								
1. WEARING SURFACE			45. CHANNEL & CHANNEL PROT.	a. WATERWAY	6					
				b. ALIGNMENT	7					
				c. SCOUR	7					
				d. SLOPE PROT., RIP-RAP, DIKES, ETC.						
2. DECK NO. OF EA TYPE SPN GRADE RATES SI & A ITEM 58	a. CONCRETE	5	5	50. APPROACH ROADWAY CONDITION		6				
	b. TIMBER			51. APPROACH SLABS						
	c. STEEL PLANK			52. PAINT SYSTEM		CODE				
	d. OPEN GRID			53. UTILITIES						
3. RAILING	a. CONCRETE		6	54. RESPONSE TO LIVE LOAD		7				
	b. TIMBER			55. ESTIMATED REMAINING LIFE		8				
	c. ALUMINUM			60. REGULATORY SIGN NOTICE ISSUED						
	d. STEEL			61. PROMPT-ACTION NOTICE ISSUED		YES				
4. CURBS, WHEELGUARDS, PARAPETS, MEDIANS			7	62. PRESENTLY POSTED		YES				
5. WALKWAYS (ON OR ATTACHED TO STRUCTURE)				63. TOT. FIELD INSP TIME (INCLUDE WRITE UP)(MAN HR)		8				
6. DECK EXP JTS. OR DEVICES. NO. OF EACH	a. STEEL PL OR FINGER			64. TOTAL SNOOPER INSP. TIME (HRS)		0				
	b. MISC PREFAB			65. TOTAL TRAFFIC CONTROL TIME (MAN HRS)		0				
	c. COMPRESSION SEAL			70. SI&A GENERAL CONDITION RATINGS						
	d. STANDARD JOINTS	1	5							
	e. OPEN JOINTS									
7. DECK DEBRIS (INCLUDES EXCESS SAND/GRAVEL)			6	a. DECK		ITEM 58	5			
SUPER STR. (FM. 1 (90)B TRUSS) ITEM 59				b. SUPERSTRUCTURE		ITEM 59	6			
10. LONGITUDINAL BEAMS OR GIRDERS				c. SUBSTRUCTURE		ITEM 60	5			
11. LONGITUDINAL JOIST OR STRINGERS			6	d. CHANNEL & CHANNEL PROT.		ITEM 61	6			
12. INT. DIAP'S, X-FRAMES, BRACING & CONN'S				71. SI&A FIELD APPRAISAL RATINGS						
13. END DIAP'S, CURTAIN WALLS, & CONN'S			7							
14. FLOOR BEAMS AND CONNECTIONS										
15. BEARING ASSEMBLIES (INCLUDING MISALIGN)				a. WATERWAY ADAQUACY		7				
16. DRAINAGE SYSTEM (ON STRUCTURE)			4	b. APPR. RDWY. ALIGNMENT		8				
17. MOVABLE SPAN MACHINERY				72. FIELD SCOUR EVALUATION		0				
SUB STR. ITEMS. ITEM 60 (INCLUDE SCOUR)				USE OF INSP. ACCESSIBILITY EQUIPMENT						
35. TIM SUB STR.	a. ABUT. & INT. BENT CAPS & RISERS		6				SNOOPER (CODE S, 4, OR N)		HRS	NO
	b. PILES, POST, SILLS, & BRACING		5				LADDER			NO
	c. BULKHEADS, WING'S, & TIE BACKS		5	BUCKET TRUCK			NO			
36. CONC SUB STR.	a. ABUT. & INT. BENT CAPS			BOAT			YES			
	b. ABUT. & BENT COL'S BREASTWALLS			OTHER			NO			
	c. ABUT. & INT. BENT PILES			SPECIAL INSPECTION REQUESTED FOR						
	d. BACKWALLS, WING'S, RETAIN. WALLS									
	e. ABUT. & BENT FOOTINGS & SILLS									
37. STEEL SUB STR.	a. ABUT. & INT. BENT CAPS & RISERS		6	NOTE						
	b. PILES, BRACING, AND BULKHEADS		7							
38. FOUNDATION PILES TYPE MATERIAL				80. INSPECTED BY: W. C. Ng						
39. SLOPE PROT., RIP-RAP (INCLUDE DRAINAGE)				81. REVIEWED BY:						
40. FENDER SYSTEMS										
41. DRIFT			6							

Bridge I&A Form 1(82)H		FIELD INSPECTION REPORT <u>Bridge Inspection & Analysis</u>	
State of North Carolina Dept. of Transportation Division of Highways			
Team Leader WILLIS C MAY			
Assisted By WTW			
Item No.	Grade		
2a	5	<p>CONCRETE DECK 5 SCALING WITH EXPOSED COARSE AGGREGATE AND POPOUTS 1/2 IN. DEEP IN ALL SPANS.</p> <p>SPAN 1 3 - 1/8 IN. TO 1/4 IN. LONGITUDINAL CRACKS THE FULL LENGTH OF SPAN. 1/16 TO 1/8 IN. TRANSVERSE CRACKS AT 1 FT, 4 FT, 7 FT, AND 11 FT FROM END BENT 1.</p> <p>SPAN 2 3 - HAIRLINE TO 1/8 IN. LONGITUDINAL CRACKS THE FULL LENGTH OF SPAN. 2 - HAIRLINE TO 1/16 IN. TRANSVERSE CRACKS AT 6 FT AND 9 FT FROM BENT 1.</p> <p>SPAN 3 1/8 IN. LONGITUDINAL CRACK NEAR CENTERLINE THE FULL LENGTH OF SPAN.</p> <p>SPAN 4 1 - 1/8 IN. LONGITUDINAL CRACK THE FULL LENGTH OF SPAN. HAIRLINE TO 1/32 IN. WIDE TRANSVERSE CRACKS AT 4 FT, 7 FT, AND 9 FT FROM BENT 3.</p> <p>SPAN 5 2 - 1/16 IN. LONGITUDINAL CRACKS FULL LENGTH OF SPAN. 1/16 IN. TRANSVERSE CRACKS AT 1 FT, 4 FT, AND 8 FT FROM END BENT 2.</p>	
3a	6	<p>CONCRETE RAILS 6 SCALING WITH EXPOSED COARSE AGGREGATE IN FACES. LEFT SIDE RAIL HAS BEEN REPAIRED IN SPAN 1, 2, 3, AND 4.</p>	
4	7	<p>CURBS 7 SCALING WITH EXPOSED COARSE AGGREGATE IN FACES.</p>	
6d	5	<p>STANDARD JOINTS 5 JOINTS ARE CRACKED AND LEAKING IN SPOTS.</p>	
7	6	<p>DECK DEBRIS 6 1 IN DEEP DIRT AND DEBRIS OUT 1 FT.</p>	
11	6	<p>LONGITUDINAL JOISTS 6 JOIST 19 IS A REPLACEMENT IN ALL SPANS. RANDOM 1/16 IN. TO 1/8 IN. LONGITUDINAL CHECKS IN SIDES OF JOISTS.</p> <p>SPAN 4 JOIST 1 SPAN 4 AT BENT 4 IS SPLIT OFF IN THE BOTTOM CORNER 1 1/2 IN. X 2 IN. HIGH X 26 IN. LONG.</p>	
16	4	<p>DRAINAGE SYSTEM 4 ALL OF THE DRAIN HOLES ARE CLOGGED.</p>	
35a	6	<p>TIMBER CAPS 6 CAPS AND CROWNSTRIPS AT END BENT 1, BENTS 1 - 4 ARE REPLACEMENTS. LONGITUDINAL CHECKS UP TO 1/8 IN. WIDE IN FACES.</p>	

Bridge I&A Form 1(82)H	FIELD INSPECTION REPORT	
State of North Carolina Dept. of Transportation Division of Highways	<u>Bridge Inspection & Analysis</u>	

Team Leader **WILLIS C MAY**

Assisted By **WTW**

Item No.	Grade	
35b	5	<p>TIMBER PILES 5 PILE 3 END BENT 1 AND PILE 2 BENT 4 GRADE 4 ALL OTHERS GRADE 5. 1/16 IN. VERTICAL CRACKS IN FACES. END BENT 1 PILE 3 END BENT 1 IS DECAYED 12 IN. HIGH X 12 IN. WIDE X 3 IN. DEEP AT THE GROUND LINE . PRIORITY MAINTENANCE ISSUED PILE 4 END BENT 1 HAS BEEN REPAIRED WITH A CONCRETE ENCASEMENT. BENT 1 PILE 2 BENT 1 HAS BEEN SPLICED AND HAS A 2 FT. DIAMETER CONCRETE ENCASEMENT. BENT 2 PILE 2 BENT 2 SPAN 3 SIDE IS DELAMINATED 8 IN. X 8 IN. X 1 IN. DEEP BELOW CROSS BRACE. BENT 3 PILE 1 BENT 3 IS DECAYED AND BROKEN OFF AT WATERLINE. STEEL PILES WITH A CROSS CAP HAS BEEN PLACED 27 IN. FROM LEFT END OF CAP. BENT 4 PILE 2 BENT 4 IS DECAYED IN THE LEFT SIDE NEAR WATERLINE 10 IN. HIGH X 8 IN. WIDE X 2 IN. DEEP. PRIORITY MAINTENANCE ISSUED PILE 3 BENT 4 HAS BEEN REPAIRED AND HAS A CONCRETE ENCASEMENT. PILE 3 BENT 4 HAS A CONCRETE ENCASEMENT AND HAS A 1/4 IN. WIDE VERTICAL CRACK.</p>
35c	5	<p>TIMBER BULKHEADS, WINGWALLS 5 END BENT 1 VERTICAL BOARDS HAVE BEEN FACE NAILED TO END BENT 1 BULKHEAD BETWEEN PILE 2 & 3. BULKHEAD BOARD # 3 BELOW CAP IS DECAYED THROUGH IN SPOTS WITH EXPOSED FILL FROM PILE 3 TO RIGHT END. ENDS OF RIGHT SIDE WINGWALL BOARDS AT END BENT 1 ARE DECAYED BACK 6 IN. TO 12 IN. END BENT 2 RIGHT SIDE WINGWALL BOARD # 2 AT END BENT 2 IS DECAYED BACK 1 FT.</p>
37a	6	<p>STEEL CAPS 6 THE STEEL CAPS HAVE AREAS OF RUST AND CORROSION AT THE EDGES AND AT THE WELDS.</p>
37b	7	<p>STEEL PILES 7 STEEL PILES HAVE SPOTS OF CORROSION IN THE EDGES.</p>
41	6	<p>DRIFT 6 DRIFT BELOW WATERLINE SEE UNDERWATER REPORT.</p>
45a	6	<p>WATERWAY 6 AQUATIC VEG IN WATERWAY.</p>

Bridge I&A Form 1(82)H State of North Carolina Dept. of Transportation Division of Highways		FIELD INSPECTION REPORT <u>Bridge Inspection & Analysis</u>	
Team Leader WILLIS C MAY			
Assisted By WTW			
Item No.	Grade		
45b	7	CHANNEL ALIGNMENT 7 SEE UNDERWATER REPORT.	
50	6	APPROACH ROADWAY CONDITION 6 BOTH APPROACHES ARE SETTLED UP TO 1 IN. PATCH IN APPROACH 2 AT END BENT 2.	
62	YES	SV 18 TTST 26	



BRIDGE INSPECTOR'S RECOMMENDATION FOR MAINTENANCE REPAIRS

Bridge: 810101

County SAMPSON

Date: 08/25/2010

These Repairs Should Be Made Within Twelve Months From Date Of This Inspection

MMS Code	Description of Function	Unit	Quantity	Remarks	Est. Cost
2816	Asphalt Surface Repair or Replacement	SY	140	APPROACHES ARE SETTLED UP TO 1 IN. AT END BENTS.	
3310	Maintenance/Repair/Replacement of Standard Bridge Expansion Joints	LF	96	JOINTS ARE CRACKED AND LEAKING IN SPOTS.	
3326	Maintain Concrete Deck	SF	200	CRACKS IN TOP OF DECK IN ALL SPANS.	
 3344	Repair / Replace Timber Substructure Components	LF	5	PILE 2 BENT 4 IS DECAYED IN THE LEFT SIDE NEAR WATERLINE 10 IN. HIGH X 8 IN. WIDE X 2 IN. DEEP. SEE DRAWING	
 3344	Repair / Replace Timber Substructure Components	LF	5	PILE 3 END BENT 1 IS DECAYED 12 IN. HIGH X 12 IN. WIDE X 3 IN. DEEP AT THE GROUND LINE . SEE DRAWING	
3346	Repair / Maintain Timber Wings & Blkhds	SF	40	DECAYED BULKHEAD AND WINGWALL BOARDS.	

Key

 Priority Maintenance Item

 Critical Finding Item

 Priority Maintenance Level Not Determined

BRIDGE INSPECTOR'S RECOMMENDATION FOR PRIORITY MAINTENANCE REPAIRS

Bridge: 810101 County SAMPSON

THE FOLLOWING MAINTENANCE ITEMS HAVE BEEN SUBMITTED IN CONJUNCTION WITH A PRIORITY MAINTENANCE REQUEST

MMS Code	MMS Description	Quantity
3344	Repair / Replace Timber Substructure Components	5 LF
Location:		
Pier Substructure	Bent/Span No. 1	PILE 3 END BENT 1
Priority Level	Status	
Priority Maintenance	Division Bridge Maintenance Notification Received	
Submitted Date:	Submitted By:	Assisted By:
08/26/2010	WILLIS C MAY	WAYNE T WILKINSON
Details		
PILE 3 END BENT 1 IS DECAYED 12 IN. HIGH X 12 IN. WIDE X 3 IN. DEEP AT THE GROUND LINE . SEE DRAWING		

MMS Code	MMS Description	Quantity
3344	Repair / Replace Timber Substructure Components	5 LF
Location:		
Pier Substructure	Bent/Span No. 4	PILE 2 BENT 4
Priority Level	Status	
Priority Maintenance	Division Bridge Maintenance Notification Received	
Submitted Date:	Submitted By:	Assisted By:
08/26/2010	WILLIS C MAY	WAYNE T WILKINSON
Details		
PILE 2 BENT 4 IS DECAYED IN THE LEFT SIDE NEAR WATERLINE 10 IN. HIGH X 8 IN. WIDE X 2 IN. DEEP. SEE DRAWING		



LONGITUDINAL AND TRANSVERSE CRACKING IN SPAN 1



TOP OF DECK SCALED WITH EXPOSED AGGREGATE



LONGITUDINAL CRACK IN SPAN 3, SIMILAR IN SPAN 2, 4 & 5



TRANSVERSE CRACKING IN SPAN 5



APPROACH 2 SETTLED AT END BENT 2



VERTICAL BOARDS FACE NAILED BETWEEN PILE 2 & 3 AT END BENT 1 BULKHEAD



DELAMINATION IN PILE 2 AT BENT 2 SPAN 3 SIDE BELOW CROSSBRACE CONNECTION



DECAY IN THE LEFT SIDE OF PILE 2 AT BENT 4 (PRIORITY MAINTENANCE ISSUED)



DECAY IN THE RIGHT SIDE OF PILE 3 AT END BENT 1 (PRIORITY MAINTENANCE ISSUED)



DECAY IN THE 3RD BULKHEAD BOARD FROM BOTTOM OF END BENT 1 CAP AND JUST TO THE LEFT OF PILE

BRIDGE MANAGEMENT UNIT
DATA ON EXISTING STRUCTURE

Run Date: 10/11/2010

COUNTY :	DIV :	DIST :	STRUCTURE NUMBER :	LENGTH :
SAMPSON	3	2	810101	87 FEET

ROUTE CARRIED :	FEATURE INTERSECTED :
SR1256	BIG SWAMP CREEK

LOCATED :	BRIDGE NAME :	CITY :
0.4 MI E.JCT SR1410		

FUNC. CLASS :	SYST.ON :	SYST.UNDER :	ADT & YR :	RAIL TYPE :
09	NFA	NFA	210 2005	LT 241 RT 241

BUILT :	BY :	PROJ :	FED.AID PROJ :	DESIGN LOAD :
1962	BMU			Other or Unknown

REHAB :	BY :	PROJ :	ALIGNMENT :	SKEW :	LANES :
	BMU		TAN	90	ON 2 UNDER

NAVIGATION :	HT. CRN. TO BED :	WATER DEPTH :
VC 0.0 FT HC 0.0 FT	12 FT	7 FT

SUPERSTRUCTURE : RC FLOOR/TIMBER JOISTS (STD. BMD-10)

SUBSTRUCTURE : EBTS&IBTS:TIMBER CAPS/TIMBER PILES @ 8'CTS,CRUTCH BT@BT3

SPANS : 1@17'9";1@17'1";1@17';1@16'10";1@17'11"

BEAMS OR GIRDERS : 19LINES 6X12 TIMBER JOIST @ VAR.CTS.

FLOOR :	ENCROACHMENT :	DECK (OUT TO OUT) :
5 RC/NO AWS		25.3 FT

CLEAR ROADWAY :	BETWEEN RAILS :	SIDEWALK OR CURB :
24.0 FT	25.4 FT	LT 0.8 FT RT 0.8 FT

VERT.CL.OVER :	VERT.CL.UNDER :	HOR.CL.UNDER :
99 FT 99 IN	00 FT 00 IN	0.0 FT

INV.RTG. :	OPE.RTG. :	CONTR.MEMBER :	POSTED :	DATE :
HS-1	HS-1	int.joist	SV 18 TTST 26	09/15/2008

SYSTEM :	GREEN LINE ROUTE :
Secondary S.R. Route	N

2ND OPENING :	3RD OPENING :	4TH OPENING :	5TH OPENING :

REMARKS :

Structure Data Worksheet

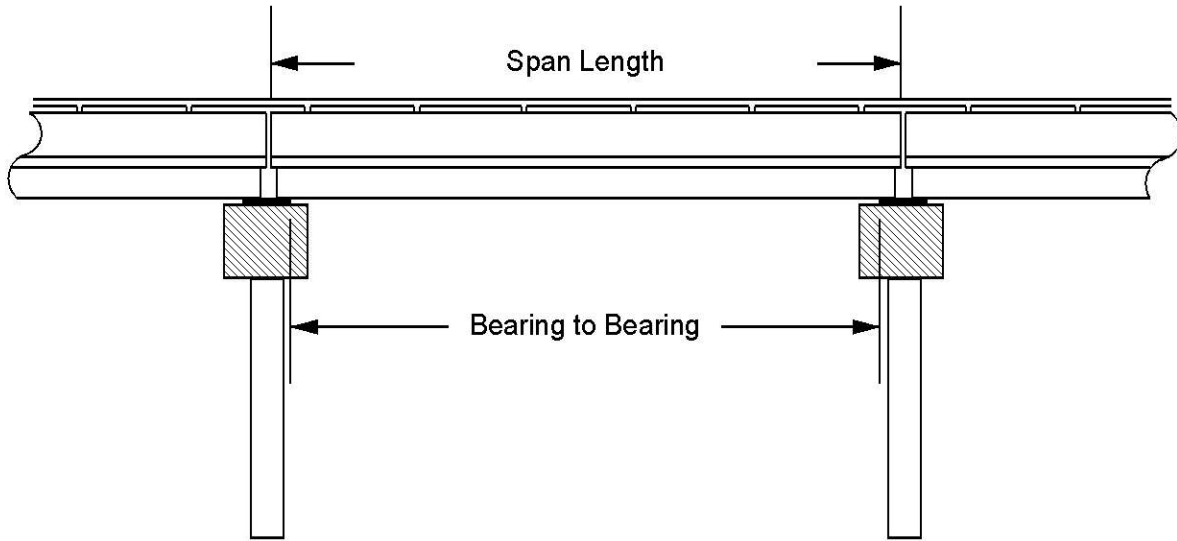
Spans

County: SAMPSON

Structure No: 810101

Date: 08/25/2010

Inspected By: WCM



Span No	Span Length	Bearing to Bearing	Comments
1	17.75	17.25	
2	17.083	17.083	
3	17	17	
4	16.833	16.833	
5	17.9167	17.33	

Stream Bed Soundings

(See next sheet for profile sketch)

Bridge No: 810101 County: SAMPSON Date: 08/25/2010 By: WCM

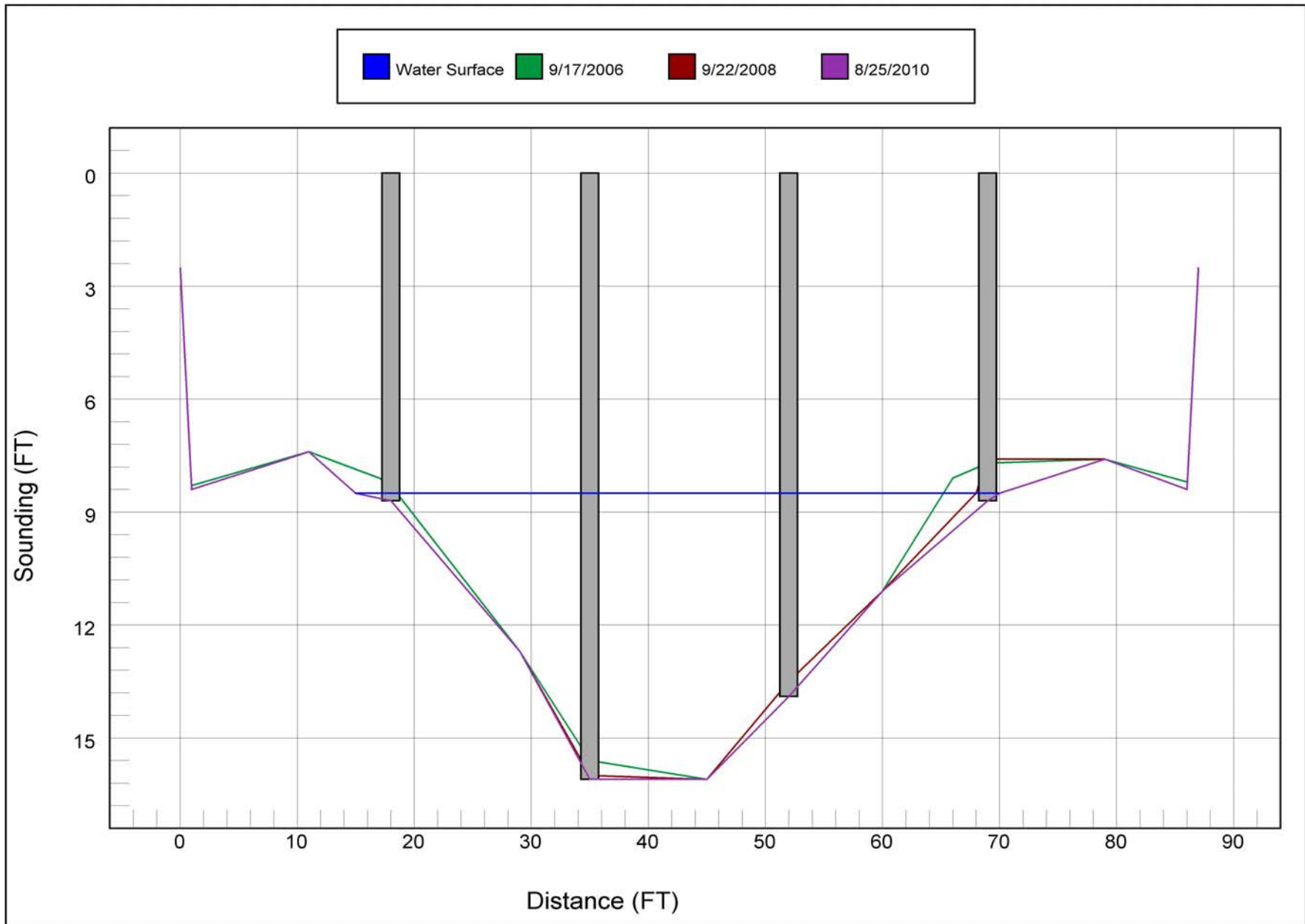
Record sounding from top of rail. Other location if needed: _____

Distance from Highwater Mark to top of rail: _____ Location of Highwater Mark: _____

DOWNSTREAM			UPSTREAM		
Distance (Station) (ft)	Sounding (ft)	Description	Distance (Station) (ft)	Sounding (ft)	Description
0	2.5	TOP OF WINGWALL			
1	8.4	GROUND AT CAP	1	5.6	GROUND AT CAP
10	7.5				
11	7.4				
15	8.5	Water Surface/Water Edge (WSWE)			
18	8.7	BENT 1	18	8.7	BENT 1
29	12.7				
35	16.1	BENT 2	35	13.5	BENT 2
45	16.1				
52	13.9	BENT 3	52	13.8	BENT 3
60	11.1				
69	8.7	BENT 4	69	11.5	BENT 4
70	8.5	Water Surface/Water Edge (WSWE)			
79	7.6				
86	8.4	GROUND AT CAP	86	7.2	GROUND AT CAP
87	2.5	TOP OF WINGWALL			

STREAMBED PROFILE (Downstream)

Top of Rail = 0 FT (Sounding)



Bridge Inspection Field Sketch

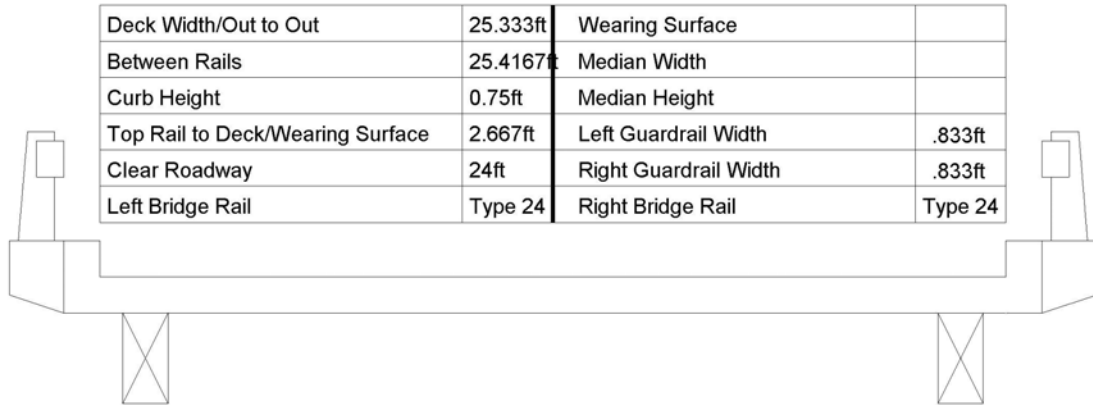


Roadway	18ft Wide	2 Paved Lanes	Looking East
Left Shoulder	4ft Wide		4ft Unpaved
Right Shoulder	4ft Wide		4ft Unpaved
Left Guardrail			
Right Guardrail			

CHECKED: 8/25/10 WCM

Title		Description	
Approach Roadway		Looking East	
Bridge No: 810101	Drawn By: CLS	Date: 09/23/2008	File Name: S0234000689

Bridge Inspection Field Sketch



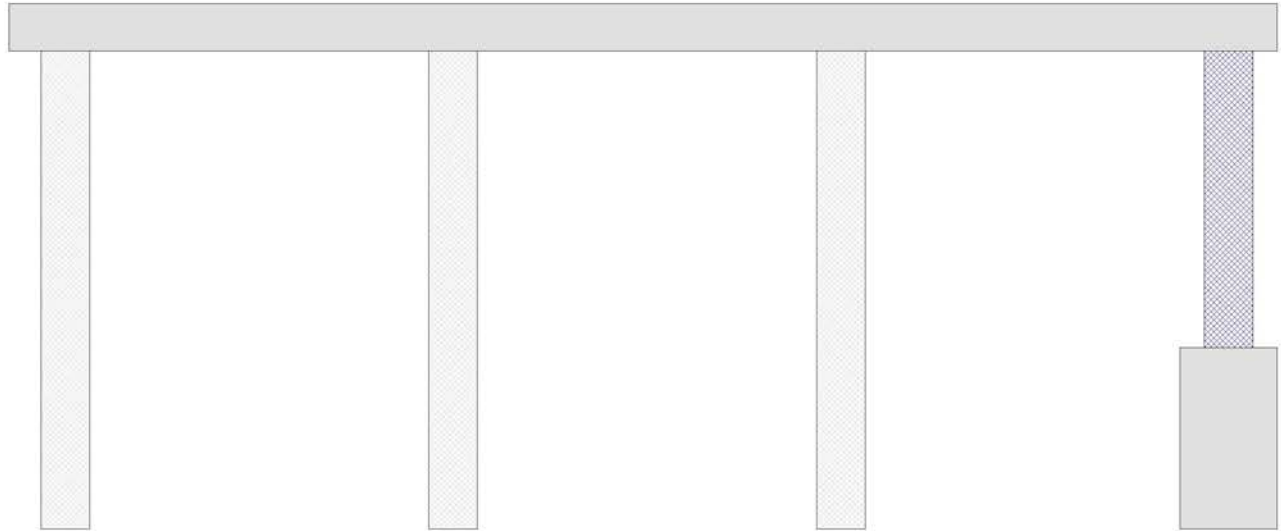
Measurements for Span #	2		
Deck Thickness	0.4167	Left Overhang	0.4167
Top of Rail to Bottom of Beam	4	Right Overhang	0.4167

Beam No	Beam Type	Spacing	Comments
1	Timber (Rectangular)	1.833ft	Joists 11 1/2 in (H) x 6 in (W)
2	Timber (Rectangular)	1.333ft	
3	Timber (Rectangular)	1.333ft	
4	Timber (Rectangular)	1.333ft	
5	Timber (Rectangular)	1.333ft	
6	Timber (Rectangular)	1.333ft	
7	Timber (Rectangular)	1.333ft	
8	Timber (Rectangular)	1.333ft	
9	Timber (Rectangular)	1.333ft	
10	Timber (Rectangular)	1.333ft	
11	Timber (Rectangular)	1.333ft	
12	Timber (Rectangular)	1.333ft	
13	Timber (Rectangular)	1.333ft	
14	Timber (Rectangular)	1.333ft	
15	Timber (Rectangular)	1.333ft	
16	Timber (Rectangular)	1.333ft	
17	Timber (Rectangular)	1.333ft	
18	Timber (Rectangular)	1.333ft	
19	Timber (Rectangular)		

CHECKED BY: WTW 8/25/10

Title Typical Section	Description 19 Lines of Timber Joists
Bridge No: 810101	Drawn By: CLS
Date: 09/23/2008	File Name: S0234000726

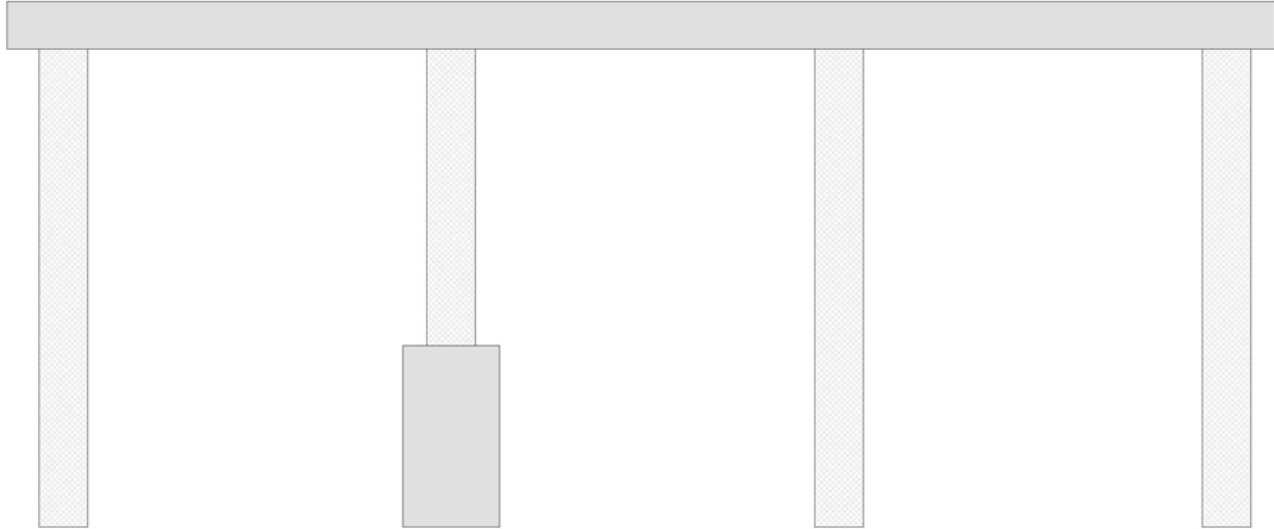
Bridge Inspection Field Sketch



Cap Information			Material Steel							
Length	Width	Height	Left Overhang	Right Overhang	Left Beam to End of Cap.	Right Beam to End of Cap.				
26.167 ft.	0.9583 ft.	0.9792 ft.	1.167 ft.	1 ft.	0.833 ft.	0.833 ft.				
Subcap Information			Material							
Length	Width	Height	Left Overhang	Right Overhang	Left Pile to Splice.					
Sill Information			Material							
Length	Width	Height								
Pile #	Material	Spacing	Width/Dia.	Height	Length	Orientation	Driven?	Replacement?	Removed?	Collar?
1	Timber	8 ft.	1 ft.			Vertical	No	No	No	No
2	Timber	8 ft.	1 ft.			Vertical	No	No	No	No
3	Timber	8 ft.	1 ft.			Vertical	No	No	No	No
4	Timber		1 ft.			Vertical	No	Yes	No	Yes
Abutment #:		1		Similar Bents:						

Title		Checked By: WTW		Date: 8/25/10		Description			
END BENT 1						END BENT 1, LOOKING EAST			
Bridge No: 810101		Drawn By: BC			Date: 9/23/2008		File Name: S0038000509		

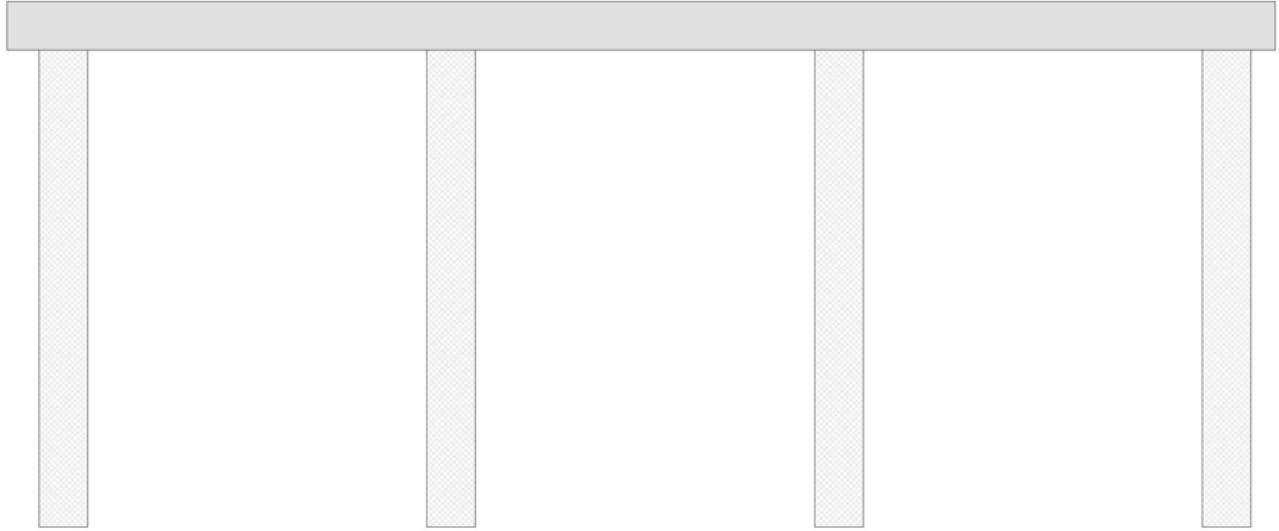
Bridge Inspection Field Sketch



Cap Information			Material Timber							
Length	Width	Height	Left Overhang	Right Overhang	Left Beam to End of Cap.	Right Beam to End of Cap.				
26.167 ft.	0.9583 ft.	0.9792 ft.	1.167 ft.	1 ft.	0.833 ft.	0.833 ft.				
Subcap Information			Material							
Length	Width	Height	Left Overhang	Right Overhang	Left Pile to Splice.					
Sill Information			Material							
Length	Width	Height								
Pile #	Material	Spacing	Width/Dia.	Height	Length	Orientation	Driven?	Replacement?	Removed?	Collar?
1	Timber	8 ft.	1 ft.			Vertical	No	No	No	No
2	Timber	8 ft.	1 ft.			Vertical	No	No	No	Yes
3	Timber	8 ft.	1 ft.			Vertical	No	No	No	No
4	Timber		1 ft.			Vertical	No	No	No	No
Bent/Abutment #: 1			Similar Bents: ABUTMENT 2							

Title		CHECKED: 8/25/10 WCM		Description	
Pile Diagram				Typical Interior Bents	
Bridge No: 810101	Drawn By: CLS	Date: 09/23/2008	File Name: S0174000151		

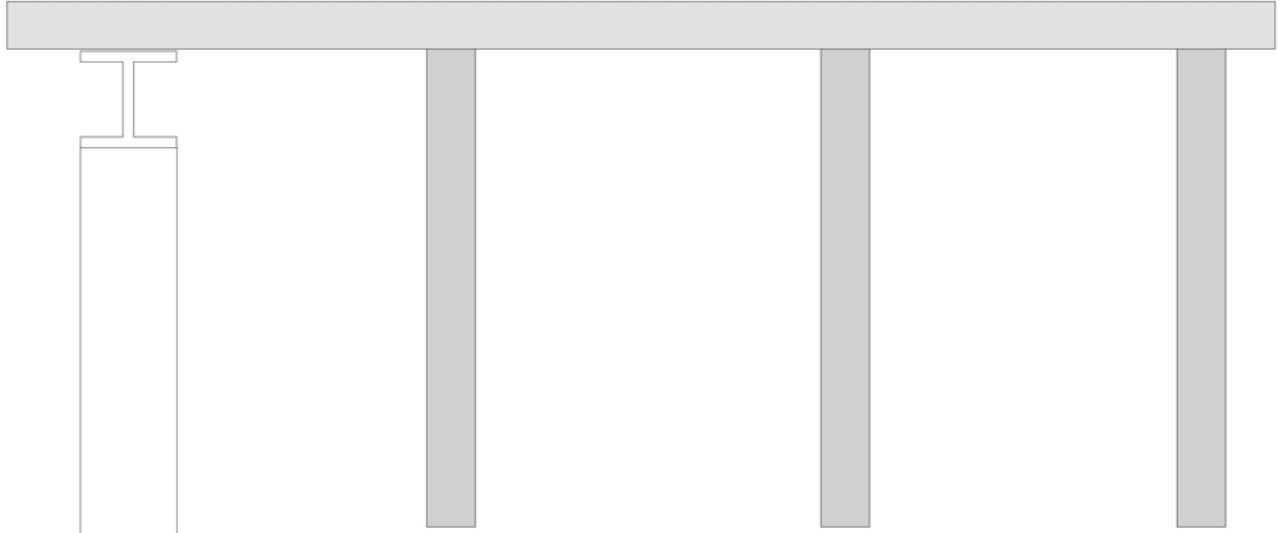
Bridge Inspection Field Sketch



Cap Information			Material Timber							
Length	Width	Height	Left Overhang	Right Overhang	Left Beam to End of Cap.	Right Beam to End of Cap.				
26.167 ft.	1 ft.	1 ft.	1.167 ft.	1.000 ft.	.833 ft.	.833 ft.				
Subcap Information			Material							
Length	Width	Height	Left Overhang	Right Overhang	Left Pile to Splice.					
Sill Information			Material							
Length	Width	Height								
Pile #	Material	Spacing	Width/Dia.	Height	Length	Orientation	Driven?	Replacement?	Removed?	Collar?
1	Timber	8 ft.	1 ft.			Vertical	No	No	No	No
2	Timber	8 ft.	1 ft.			Vertical	No	No	No	No
3	Timber	8 ft.	1 ft.			Vertical	No	No	No	No
4	Timber		1 ft.			Vertical	No	No	No	No
Bent/Abutment #: 2		Similar Bents: End bent 2								

Title BENT 2		Description BENT 2			
Bridge No: 810101	Drawn By: WCM	Date: 8/25/2010	File Name: S0014003933		

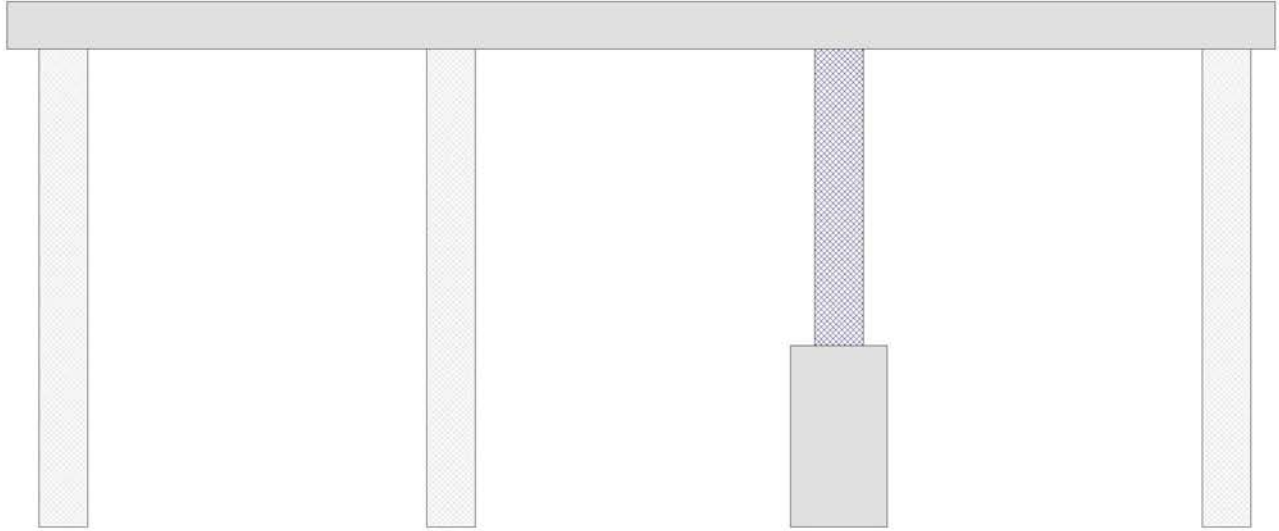
Bridge Inspection Field Sketch



Cap Information			Material Timber							
Length	Width	Height	Left Overhang	Right Overhang	Left Beam to End of Cap.	Right Beam to End of Cap.				
26.167 ft.	.958 ft.	.979 ft.	2.250 ft.	1.000 ft.	.833 ft.	.833 ft.				
Subcap Information			Material							
Length	Width	Height	Left Overhang	Right Overhang	Left Pile to Splice.					
Sill Information			Material							
Length	Width	Height								
Pile #	Material	Spacing	Width/Dia.	Height	Length	Orientation	Driven?	Replacement?	Removed?	Collar?
1	Steel	6.833 ft.	1 ft.			Vertical	Yes	No	No	No
2	Timber	8 ft.	1 ft.			Vertical	Yes	No	No	No
3	Timber	8 ft.	1 ft.			Vertical	Yes	No	No	No
4	Timber		1 ft.			Vertical	Yes	No	No	No
Bent/Abutment #: 3			Similar Bents:							

Title BENT 3		CHECKED: 8/25/10 WCM		Description LOOKING EAST	
Bridge No: 810101	Drawn By: BC	Date: 9/23/2008	File Name: S0038000507		

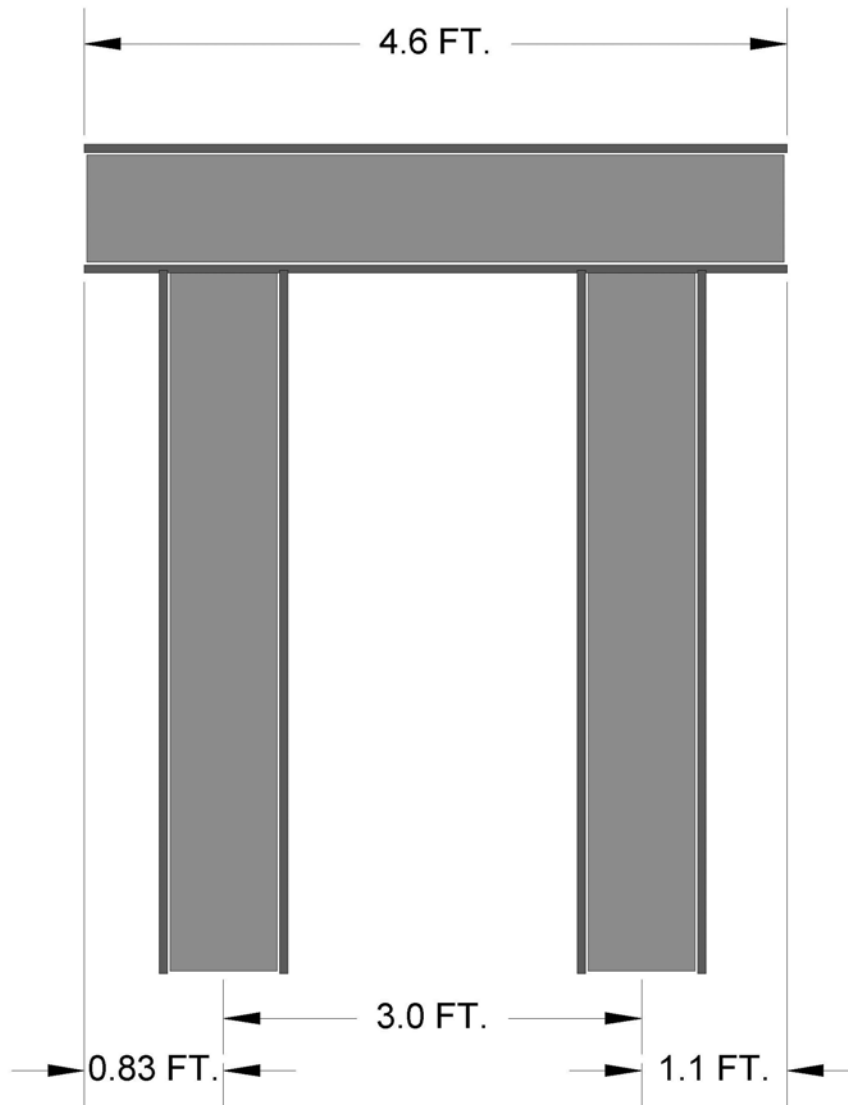
Bridge Inspection Field Sketch



Cap Information			Material Timber							
Length	Width	Height	Left Overhang	Right Overhang	Left Beam to End of Cap.	Right Beam to End of Cap.				
26.167 ft.	.958 ft.	.979 ft.	1.167 ft.	1.000 ft.	.833 ft.	.833 ft.				
Subcap Information			Material							
Length	Width	Height	Left Overhang	Right Overhang	Left Pile to Splice.					
Sill Information			Material							
Length	Width	Height								
Pile #	Material	Spacing	Width/Dia.	Height	Length	Orientation	Driven?	Replacement?	Removed?	Collar?
1	Timber	8 ft.	1 ft.			Vertical	No	No	No	No
2	Timber	8 ft.	1 ft.			Vertical	No	No	No	No
3	Timber	8 ft.	1 ft.			Vertical	No	Yes	No	Yes
4	Timber		1 ft.			Vertical	No	No	No	No
Bent/Abutment #: 4			Similar Bents:							

Title BENT 4	CHECKED BY: WTW 8/25/10	Description BENT 4 LOOKING EAST
Bridge No: 810101	Drawn By: BC	Date: 9/23/2008 File Name: S0038000508

Bridge Inspection Field Sketch

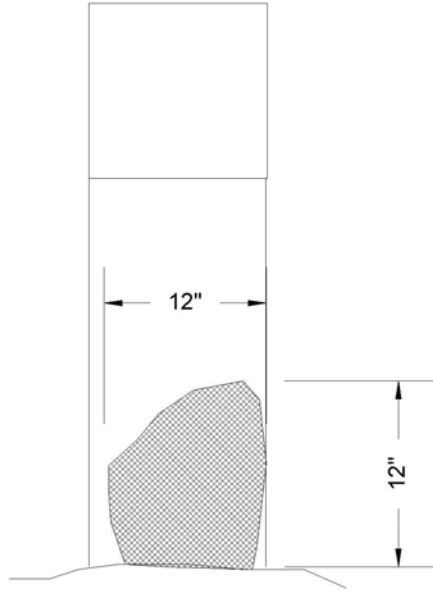


STEEL CAP GOES THROUGH OLD P-1
STEEL CRUTCH P-1, BT.4
10" STEEL H-PILES

CHECKED: 8/25/10 WCM

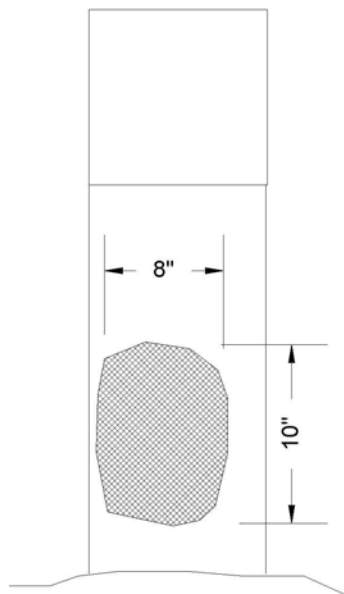
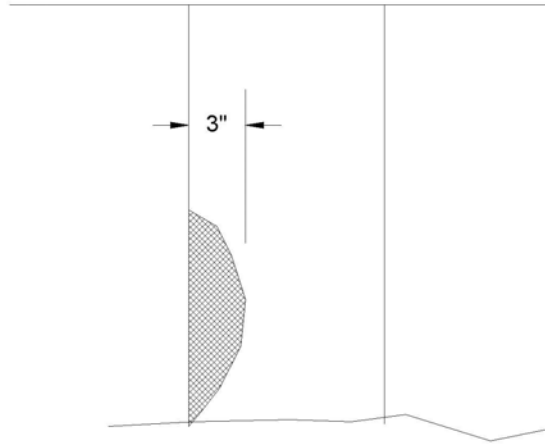
Title		Description	
CRUTCH PROFILE		CRUTCH BENT PROFILE	
Bridge No: 810101	Drawn By: PGR	Date: 04/07/2006	File Name: S0174000150

Bridge Inspection Field Sketch



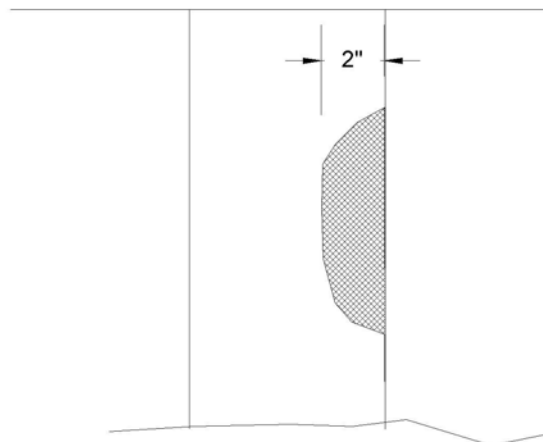
RT SIDE PILE 3 END BENT 1

END BENT 1 SPAN 1 SIDE



LT SIDE PILE 2 BENT 4

BENT 4 SPAN 5 SIDE



Title
PILE CONDITIONS

Description
CONDITIONS

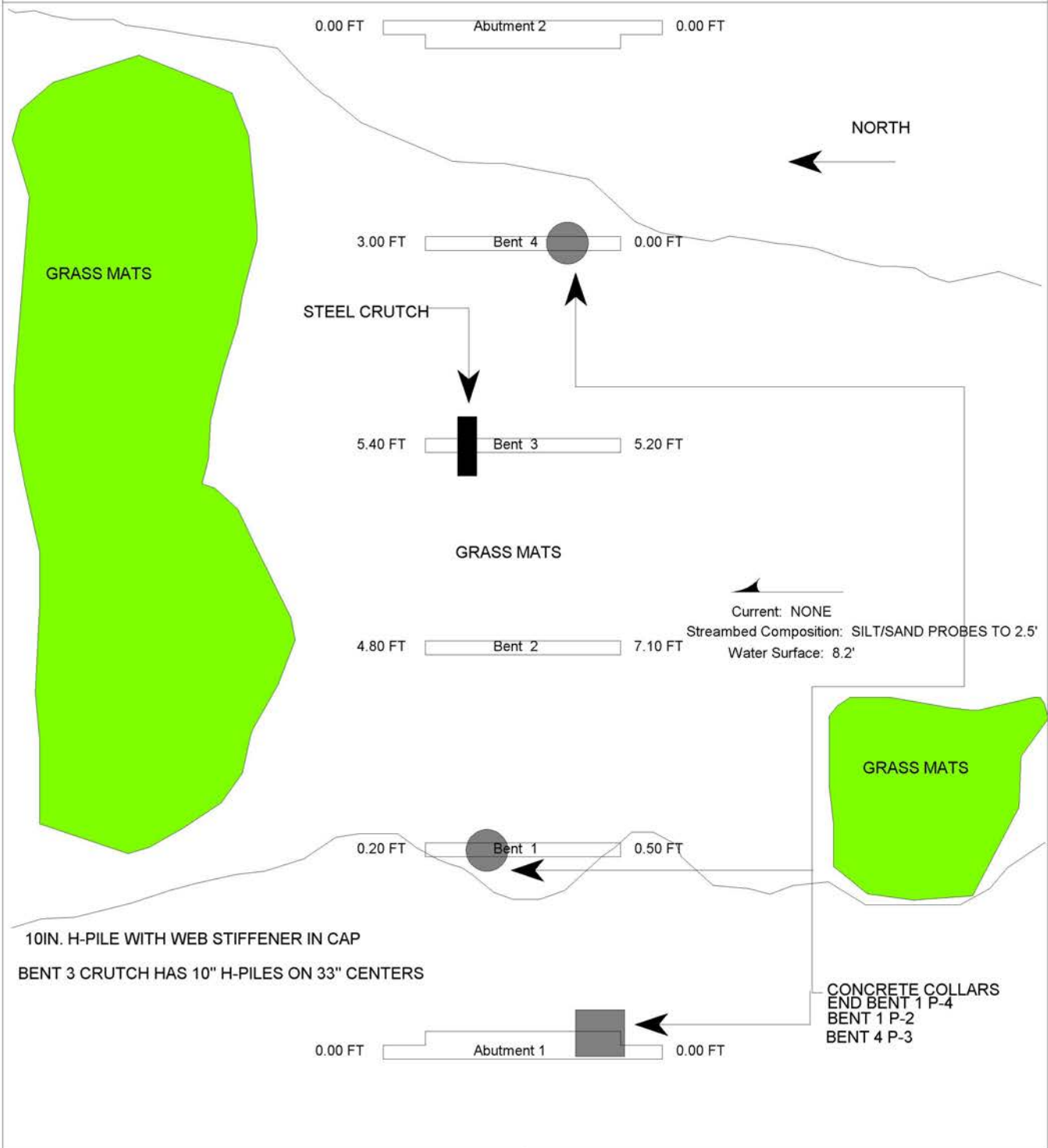
Bridge No: 810101

Drawn By: WCM

Date: 8/25/2010

File Name: S0014003934

Bridge Inspection Field Sketch



Title		Description	
PLAN VIEW		TOP VIEW	
Bridge No: 810101	Drawn By: PGR	Date: 04/07/2006	File Name: S0174000149



LOOKING EAST



APPROACH 1



WEIGHT POSTING



JOINT AT END BENT 1



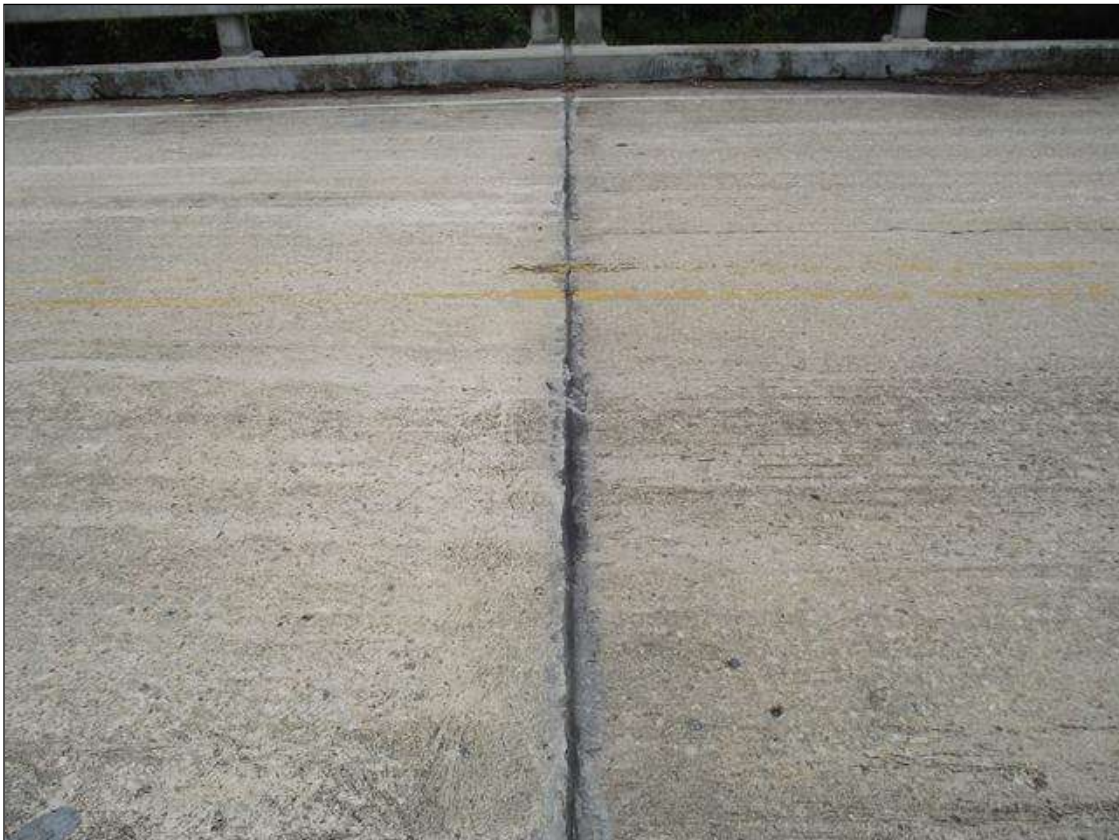
SPAN 1 OVERVIEW



JOINT AT BENT 1



SPAN 2 OVERVIEW



JOINT AT BENT 2



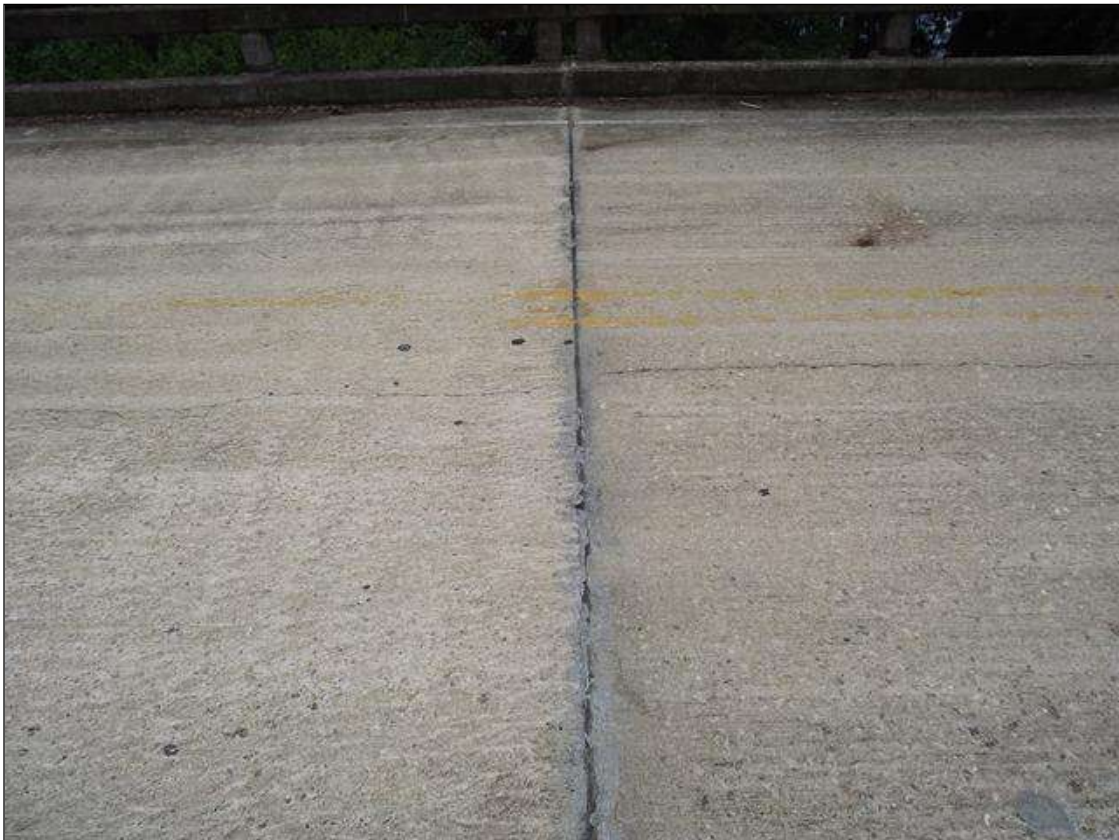
LOOKING SOUTH DOWNSTREAM



LOOKING NORTH UPSTREAM



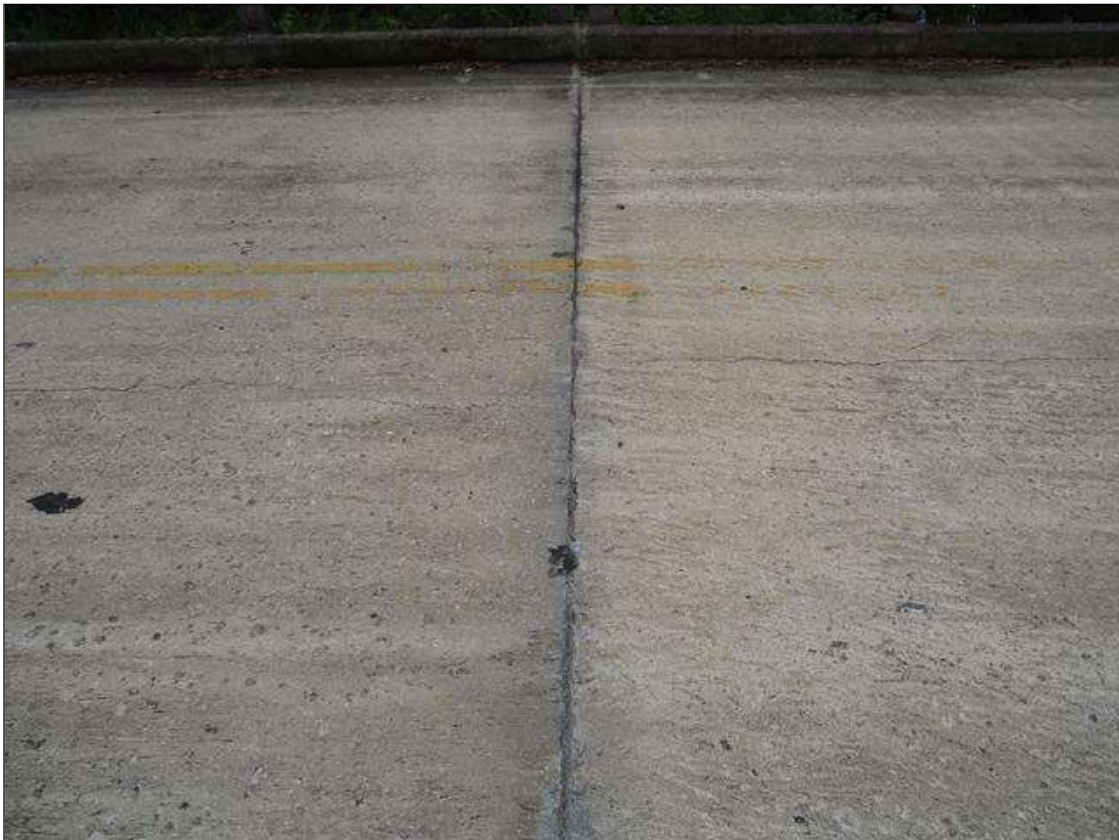
SPAN 3 OVERVIEW



JOINT AT BENT 3



SPAN 4 OVERVIEW



JOINT AT BENT 4



SPAN 5 OVERVIEW



APPROACH 2



LOOKING WEST



SOUTH PROFILE



END BENT 2 OVERVIEW



CRUTCH PILES AT BENT 3 LEFT END OF CAP



NORTH PROFILE



BENT 2 SPAN 3 SIDE, OTHER BENTS SIMILAR



SUPERSTRUCTURE OVERVIEW



SUPERSTRUCTURE OVER END OF CAP



END BENT 1 OVERVIEW